



Specification Sheet

**Internal Cheek
Meat**



1. Description

Meat originated exclusively of the head of pork. It contains the interior of cheek meat as pictures. The medium weight is around 40 grms.

2. Rules

The raw material corresponds to the legal instructions of the EU and its member countries, regarding waste, medicines, micro toxins and hormones. Referring to REGULATION (EC) No 853/2004 OF THE EUROPEAN PARLIAMENT AND OF THE COUNCIL of April 29, 2004.

3. Composition

Meat of head of pig exclusively of origin the EC.

4. Packing

Frozen in IQF. Carton boxes of 5 kg. net weight.

Pallet in EPAL of 80 x 120, that it means 16 floors of 8 blocks that it makes 128 boxes and it weight approximately 640 kgrs.

5. Consume

Cook before to consume (minimum 70°C in the middle of the product before 3 minutes).

Fresh Products: Expiry date 12 days as of date production.

Frozen Products: Expiry date 18 months as of date frozen.

6. Conditions of transport and conservation.

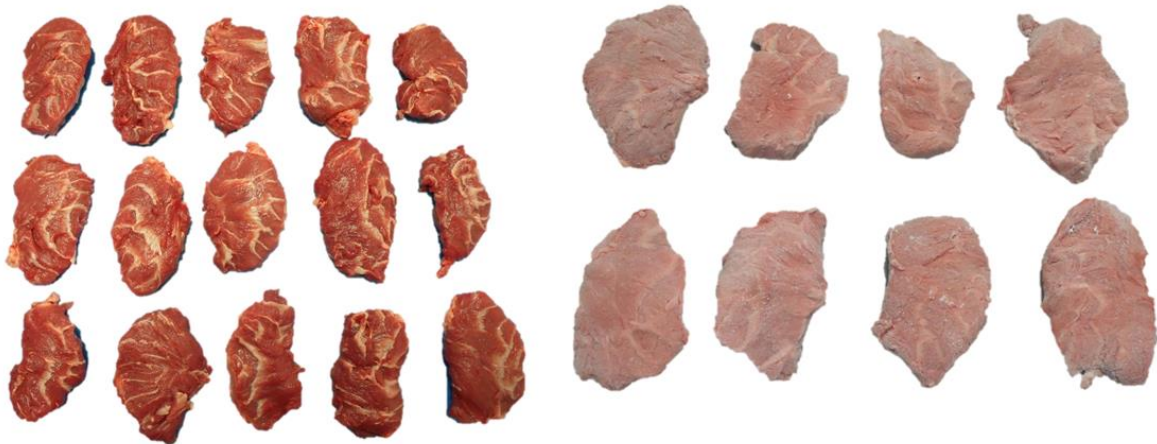
For fresh products, avoid superior temperatures to 4°C. To maintain it stable to 0-4°C.

For frozen products, avoid inferior temperatures to -12°C. To maintain it stable to -18°C.

7. Label

- Name and direction producing / Denomination of the product / N° of lot.
- N° of sanitary identification / Weight / Date of frozen.
- Date limit of optimal consumption / Temperature of conservation.

8. Pictures



Department of Quality:

Codice:

145.00

Date: 27/02/2020
Revision: 1 Pag: 1